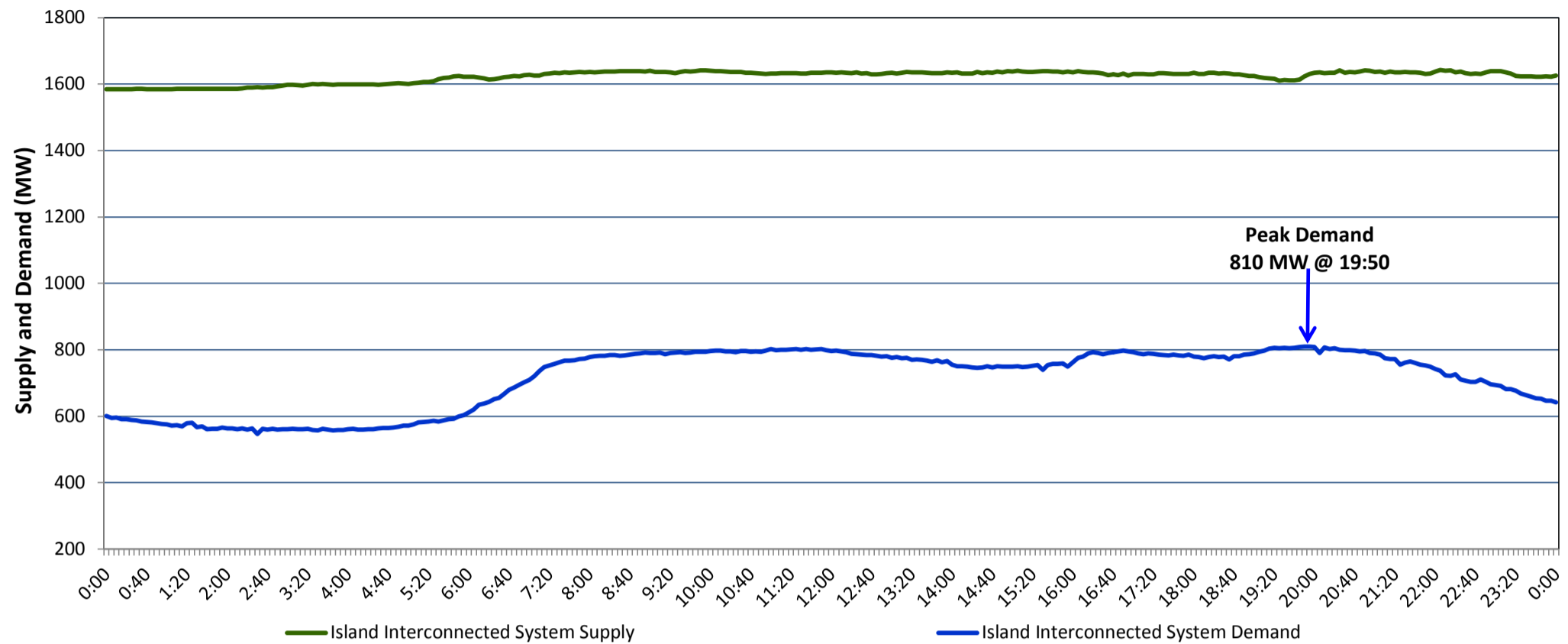


**Newfoundland Labrador Hydro (NLH)
Supply and Demand Status Report Filed Wednesday, September 27, 2017**

**Section 1
Island Interconnected System Supply and Demand
Actual 24 Hour System Performance For Tuesday, September 26, 2017**



Supply Notes For September 26, 2017

^{1,2}

- A As of 0827 hours, July 31, 2017, Holyrood Unit 2 unavailable due to planned outage 165 MW (170 MW).
- B As of 1527 hours, September 17, 2017, Cat Arm Unit 1 unavailable due to planned outage (67 MW).
- C As of 1229 hours, September 22, 2017, Stephenville Gas Turbine available at 25 MW (50 MW).
- D As of 1619 hours, September 22, 2017, Holyrood Unit 3 removed from service for economic dispatch (150 MW).

**Section 2
Island Interconnected Supply and Demand**

Wed, Sep 27, 2017	Island System Outlook ³	Seven-Day Forecast	Temperature (°C)		Island System Daily Peak Demand (MW) Forecast
			Morning	Evening	
Available Island System Supply: ⁵	1,475 MW	Wednesday, September 27, 2017	7	9	870
NLH Generation: ⁴	1,195 MW	Thursday, September 28, 2017	15	17	850
NLH Power Purchases: ⁶	105 MW	Friday, September 29, 2017	14	10	900
Other Island Generation:	175 MW	Saturday, September 30, 2017	7	6	965
Current St. John's Temperature:	4 °C	Sunday, October 01, 2017	8	9	935
Current St. John's Windchill:	N/A °C	Monday, October 02, 2017	6	6	1,000
7-Day Island Peak Demand Forecast:	1,000 MW	Tuesday, October 03, 2017	6	9	950

Supply Notes For September 27, 2017

³

- E At 0737 hours, September 27, 2017, Upper Salmon Unit unavailable due to planned outage (84 MW).

- Notes:
1. Generation outages for running and corrective maintenance are included. These are not unusual for power system operations. They generally do not impact customer supply. The power system operators schedule outages to system equipment whenever possible to coincide with periods when customer demands are low and sufficient supply reserves are available. However, from time to time equipment outages are necessary and reserves may be impacted.
 2. Due to the Island Interconnected System being isolated from the larger North American grid, when there is a sudden loss of large generating units some customer's load must be interrupted for short periods to bring generation output equal to customer demand. This automatic action of power system protection, referred to as under frequency load shedding, is necessary to ensure the integrity and reliability of system equipment. Under frequency events typically occur 5 to 8 times per year on the Island Interconnected System and the resultant customer load interruptions are generally less than 30 minutes.
 3. As of 0800 Hours.
 4. Gross output including station service at Holyrood (24.5 MW) and improved NLH hydraulic output due to water levels (35 MW).
 5. Gross output from all Island sources (including Note 4).
 6. NLH Power Purchases include: CBPP Co-Gen, Nalcor Exploits, Rattle Brook, Star Lake, Vale capacity assistance (when applicable), and Wind Generation.

**Section 3
Island Peak Demand Information
Previous Day Actual Peak and Current Day Forecast Peak**

Tue, Sep 26, 2017	Actual Island Peak Demand ⁸	19:50	810 MW
Wed, Sep 27, 2017	Forecast Island Peak Demand		870 MW

- Notes: 8. Island Demand is supplied by NLH generation and purchases, plus generation owned and operated by Newfoundland Power and Corner Brook Pulp & Paper (Deer Lake Power, DLP).